



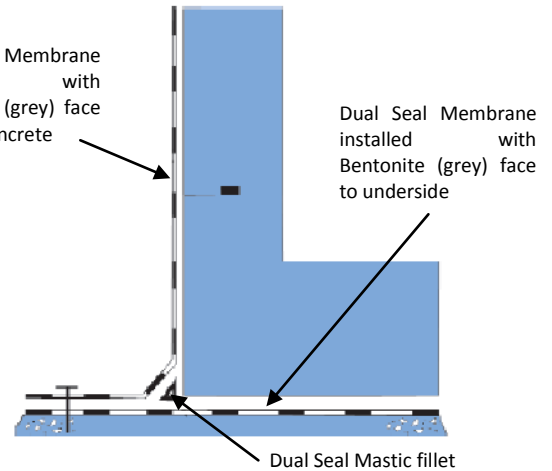
DUAL SEAL MEMBRANE

DESCRIPTION

Dual Seal Membrane is a unique self-swelling, self-healing tanking membrane designed for use as a cold applied flexible membrane that provides a barrier to the passage of water in all underground structures. An LG grade is available for reverse tanking and a salt water grade for saline conditions.

APPLICATION

Dual Seal Membrane is simply laid on a blinding layer in horizontal situations, when being installed vertically it is mechanically fixed to the concrete substrate. There is no need for primers and the membrane may be installed directly onto green concrete or in damp conditions. Bitusheet overband tape is used to seal lap joints to the membrane.



Total Membrane Thickness	4 mm
Supply	1.22 metre x 7.32 metre Rolls
HDPE Thickness	0.375 mm
Roll Width	1.22 m
Roll Length	7.32 m
Roll Weight	41 kgs
Coverage area per Roll (Subject to standard overlaps)	8.59 m ²

APPROVALS

Dual Seal Membrane is Agrément certified for use as a suitable tanking membrane for all below ground structures.



PHYSICAL PROPERTIES	VALUE	TEST METHOD
Tensile Strength	27.50 N/mm ²	ASTM D412
% Elongation at Break	700%	D638 Type 4
Puncture Resistance	43 kg	FTMS 101B
Resistance to Hydrostatic Head	46 m	ASTM D751 Method A
Resistance to micro organisms	Unaffected	

Please contact our Technical department should you require further information or project specific application details



DUAL SEAL MEMBRANE ACCESSORIES

DESCRIPTION

To complement the Dual Seal waterproofing system, Inform UK provide the following accessories to be used in conjunction with Dual Seal Membrane. Please contact our Technical Sales Office for further information regarding their use and application.

DUAL SEAL MASTIC

A troweled mastic comprising of a special formulation of expandable minerals and elastomeric compound which expands and stiffens in the presence of water to form an impervious barrier to water penetration. Used for filling voids, tie holes and honeycombing. May be used to form a 45° fillet at transitions.

Supplied	19 Litre Pails
Material	Expandable minerals and compounds
Colour	Grey/Black
Water Migration Resistance	100%
Coefficient of Permeability	10×10^{-10}
Specific Gravity	1.2

DUAL SEAL BENTONITE GRANULES

Dual Seal Bentonite Granules are a premium grade high swelling Bentonite granule that reacts in the presence of water to form an impervious waterproof gel. Used for forming 40mm x 40mm fillets at all horizontal and vertical transitions.

Supplied	22.7 kg bags
Material	Sodium Bentonite Granules
Colour	Grey
Density	960 kgm ³
Coefficient of Permeability	10×10^{-10}
Specific Gravity	1.2

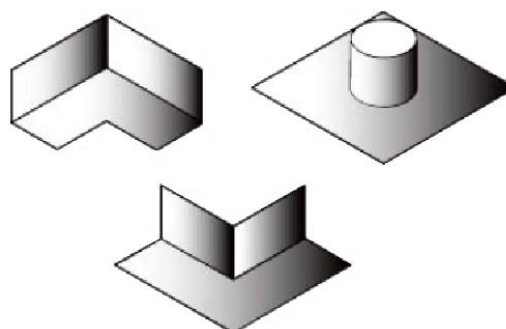
BITUSHEET XL TAPE

Bitusheet XL Self Adhesive Reinforcing Tape comprises of a cross laminated high density polyethylene sheet coated with a bitumen polymer adhesive and is faced with a release sheet. Used as an overband tape for sealing lap joints to Dual Seal Membrane.

Material	Bitumen Polymer Adhesive
Colour	Black
Roll Length	20 Metres
Roll Widths	100mm, 150mm, 300m

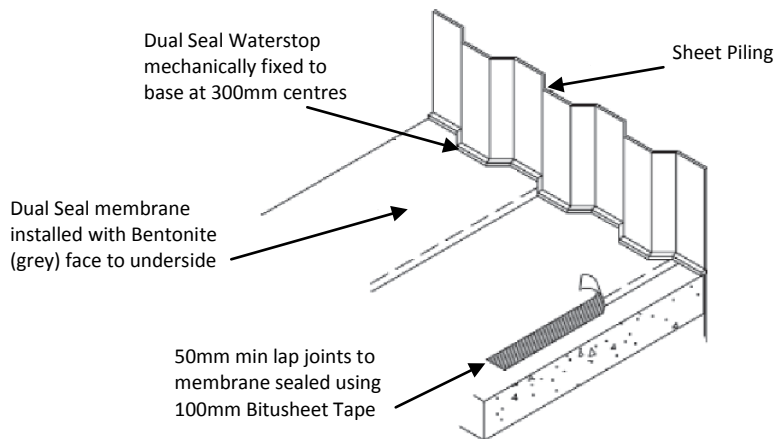
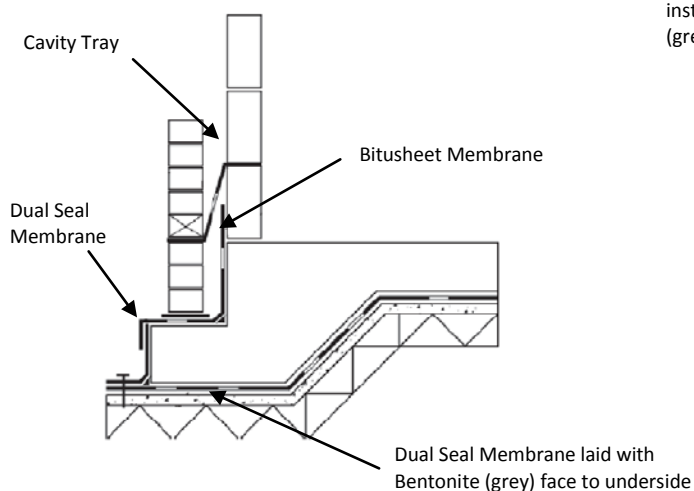
PREFORMED CORNERS AND TOP HATS

Manufactured from a high performance polymeric material. Inform UK provide a range of preformed corners and Top Hats to suit junctions and pipe penetrations which are easily sealed to the Dual Seal Membrane System using Bitusheet Double Sided Tape.



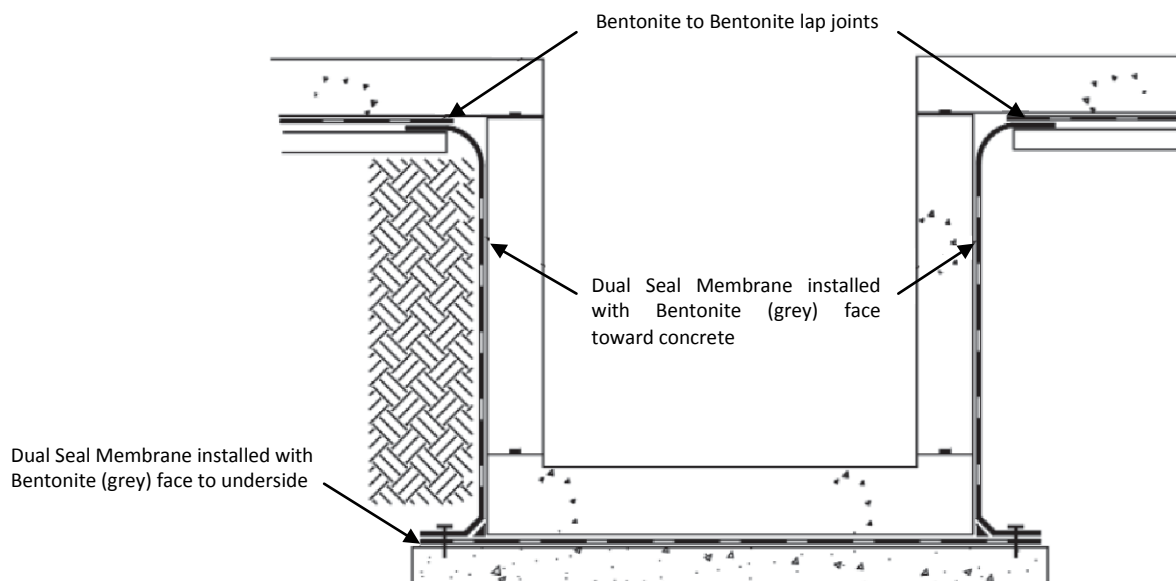


DUAL SEAL MEMBRANE APPLICATION DETAILS



Dual Seal Membrane installation to sheet piling. Dual Seal installed with Bentonite (grey) face to underside

Please contact our Technical department should you require further information or project specific application details



Inform UK Ltd products are guaranteed against defective materials and manufacture. Products are sold subject to the Inform Terms and Conditions of Sale, copies of which are available on request. Inform UK Ltd endeavours to ensure that all the above data and any further advice is correct, however Inform UK cannot accept liability for the use to which products are put to or the way in which they are used. All recommendations stated by the company are in good faith. Recommendations do not over-ride the basic obligation of the user to satisfy themselves at all times as to suitability of the product their particular application.



Inform UK Ltd
The Industrial Park
Ely Road, Waterbeach
Cambridge, CB25 9PG
Tel: 01223 862230

Web: www.informuk.co.uk
Email: general@informuk.co.uk