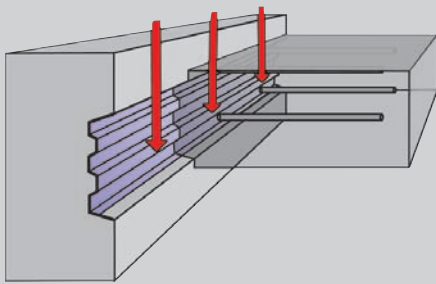
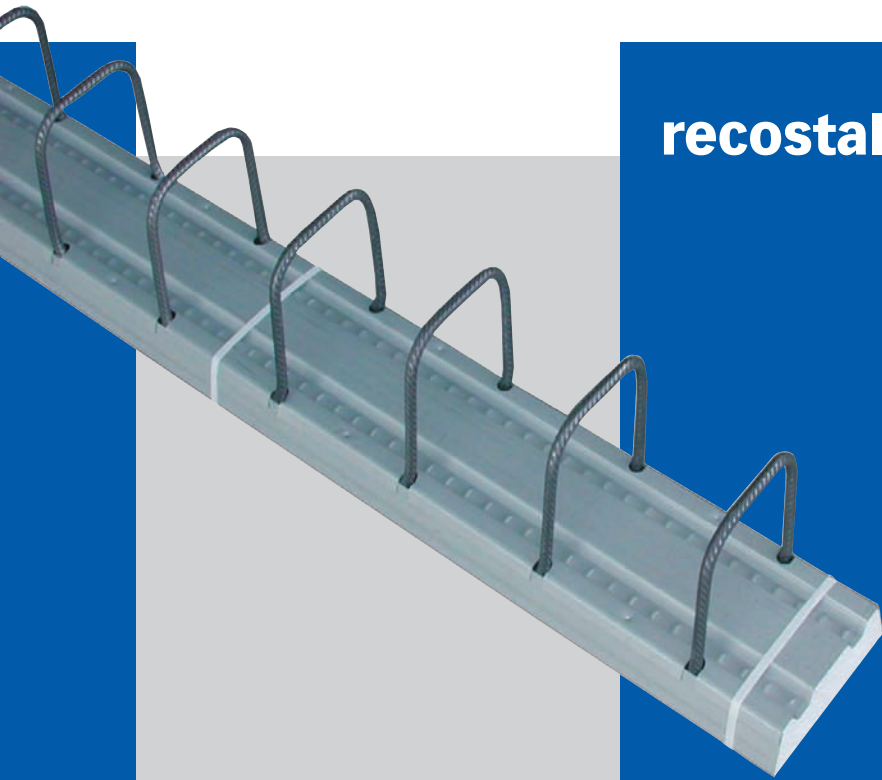
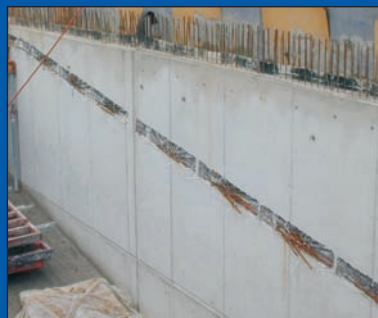


recostal® type RSH

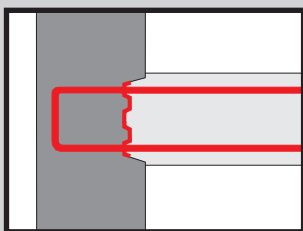


Starter packs with trapezoidal profile

The recostal-Starter Pack type RSH consists of a trapezoidally profiled box made from galvanized steel sheet. In the case of shear force loads acting in transverse direction to the starter pack, the surface of the joint corresponds to category "key profiled" according to Eurocode 2.

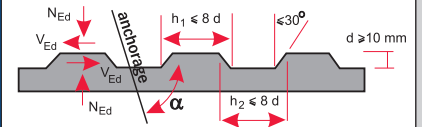


high shear strength ✓
joint category ✓
"key profiled"



Eurocode 2

Geometry of a key profiled joint:



The recostal-Trapezoidal Profile meets the demands of Eurocode 2 for the highest category "key profiled".

DBV-Guidelines

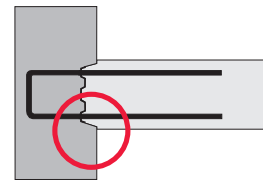
Joint classification:

Experiments have shown that starter packs without a trapezoidal profile are to be classified as "rough", "smooth" or "very smooth". Boxes that are not classified are always regarded as category "very smooth".

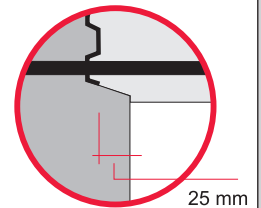
Concrete cover:

According to DIN 1045-1, part 6 with table 4, the concrete cover for boxes remaining in the concrete has to be within the limits at the weakest point. Regarding the box the allowance for tolerances $\varnothing c$ can be reduced by 5 mm.

Improved protection against corrosion

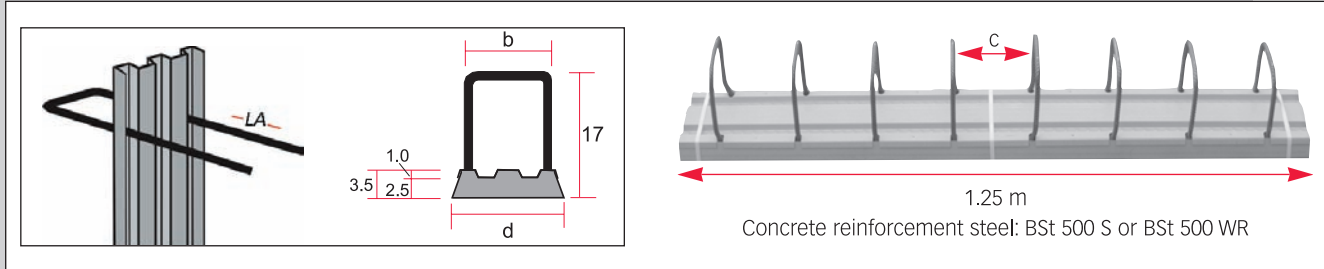


With type RSH the box is systematically recessed by 25 mm.



Starter packs

Joint category
"key profiled"



	Type	ø / c	Lap length	c (cm)	b (cm)	d (cm)
	RSH 12	- 8/15	30	17	12	15
		- 8/20	30	17	12	15
		-10/15	38	17	12	15
		-10/20	38	17	12	15
		-12/15	45	17	12	15
		-12/20	45	17	12	15
	RSH 14	- 8/15	30	17	14	17
		- 8/20	30	17	14	17
		-10/15	38	17	14	17
		-10/20	38	17	14	17
		-12/15	45	17	14	17
		-12/20	45	17	14	17
	RSH 16	- 8/15	30	17	16	19
		- 8/20	30	17	16	19
		-10/15	38	17	16	19
		-10/20	38	17	16	19
		-12/15	45	17	16	19
		-12/20	45	17	16	19
	RSH 18	- 8/15	30	17	18	21
		- 8/20	30	17	18	21
		-10/15	38	17	18	21
		-10/20	38	17	18	21
		-12/15	45	17	18	21
		-12/20	45	17	18	21
	RSH 20	- 8/15	30	17	20	23
		- 8/20	30	17	20	23
		-10/15	38	17	20	23
		-10/20	38	17	20	23
		-12/15	45	17	20	23
		-12/20	45	17	20	23

Specifications

_____m
of starter packs with trapezoidal profile according to Eurocode 2 category "key profiled" for the horizontal installation of construction parts to be supplied and installed.

Construction width: d = _____cm
Bar diameter: ø = _____mm
Centres: c = _____cm

Make: recostal® type RSH

RSH active

For the installation into potentially waterlogged construction joints, type RSH starter packs can be manufactured with a bentonite coating on both sides.

