



Safe



Efficient



Versatile



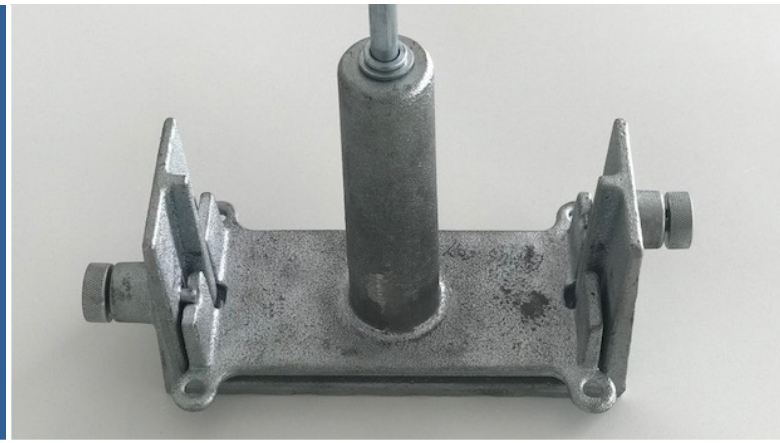
## SafeProp

Safe back propping during concrete curing

# SafeProp safe back propping

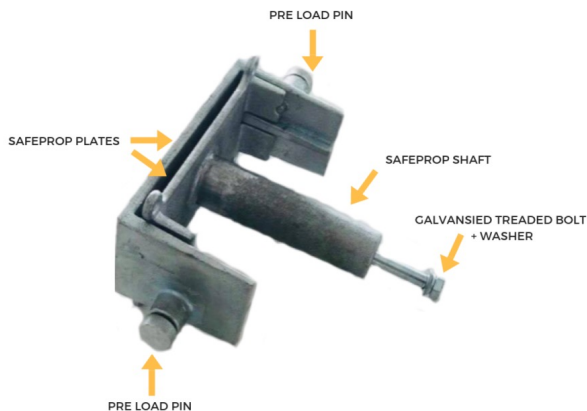
## Prevents serious injuries

The patented spring loaded attachment prevents back props from falling over during the concrete curing and post-tensioning period.



## Increases efficiency

Removing the need to drill support anchors onto prop heads, or the requirement for ledger frames to stabilise back props, means the installation is quicker and easier, saving time and money.



## Maintains structural integrity

Removing the need to drill into the slab reduces the risk of concrete cancer and prevents contact with stressing cables, reinforcement and services. The SAFEPROP unit will support and transfer the prop loads up to 15mm deflection.

Beyond 15mm deflection the SAFEPROP unit will still have the ability prevent the prop falling over (to a maximum overall deflection of 50mm).

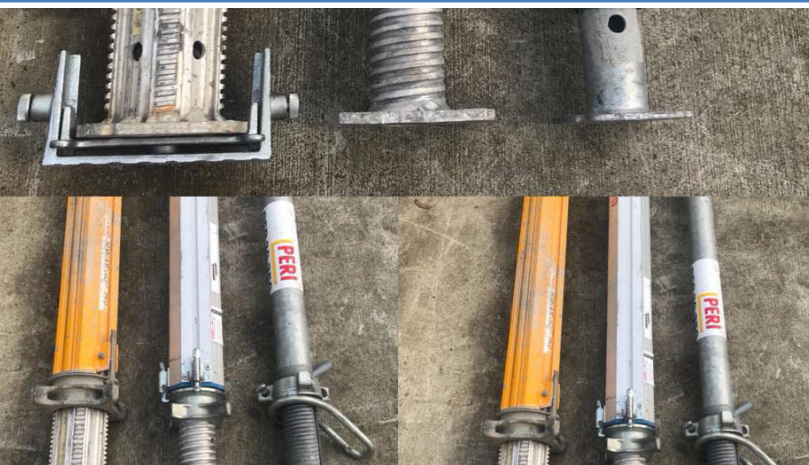


## One size fits all

Tested and compatible with all legs or props used in the concrete frame market.

Can be used at the top or at the bottom of the prop post-tensioning period.

Each SAFEPROP unit weighs 4.5kg.



**ISCHEBECK**<sup>®</sup>  
**INFORM**

INFORM (UK) Ltd.  
Industrial Park, Ely Road, Waterbeach, Cambridge CB25 9PG  
Tel +44 (0)1223 862230 Fax +44 (0)1223 440246  
Email [enquiries@informuk.co.uk](mailto:enquiries@informuk.co.uk) [www.informuk.co.uk](http://www.informuk.co.uk)